

Parasites of the common carp *Cyprinus carpio* L., 1758 (Teleostei: Cyprinidae) from water bodies of Turkey: updated checklist and review for the 1964–2014 period

Lorenzo VILIZZI^{1*}, Ali Serhan TARKAN¹, Fitnat Güler EKMEKÇİ²

¹Faculty of Fisheries, Muğla Sıtkı Koçman University, Kötekli, Muğla, Turkey

²Department of Biology, Faculty of Science, Hacettepe University, Ankara, Turkey

Received: 18.01.2014

Accepted/Published Online: 14.11.2014

Printed: 30.07.2015

Abstract: A synopsis is provided of the parasites of common carp *Cyprinus carpio* L. from water bodies of Turkey based on literature data from 1964 to 2014. In total, 45 studies were included in the review and these provided data from 41 water bodies, comprising 12 man-made reservoirs, 21 natural lakes, and 8 water courses. Forty-one different taxa (including molluscan *Glochidium* sp.) in total were recorded. Of these taxa, 2 had not been previously reviewed for Turkey, and 4 were excluded from the list because of dubious identification. The Turkish parasite fauna of common carp living under natural conditions was dominated by ciliates (Ciliophora) among the protozoans and by flatworms (Platyhelminthes) among the metazoans, and this was both in terms of occurrence on fish and across water bodies. The absence of 7 taxa from both the European and North American checklists can be explained by the location of Turkey at the frontier between Asia and Europe. Additionally, the parasite fauna of the common carp in Turkey was consistently different from that of the far eastern species' specimens. Lack of differences among water bodies in both taxon richness and composition indicates overall homogeneity, likely a result of the species' relatively long-term establishment across the region. It is suggested that management options could benefit from this level of homogeneity.

Key words: Ciliophora, Platyhelminthes, Anatolia, parasite richness

1. Introduction

The common carp (*Cyprinus carpio* L., 1758) is one of the most widely distributed freshwater fishes worldwide (Welcomme, 1988). This is due to its large native area of Eurasian distribution (Balon, 1995) combined with historical translocations and introductions for farming, aquaculture, and sport fishing (Hoffmann, 1995; Copp et al., 2005; Balon, 2006). As a result, a large number of organisms are known to parasitize the common carp (e.g., Jeney and Jeney, 1995; Hoffmann, 1999; Baruš et al., 2002), and this causes concerns about the potential transmission of associated diseases to other fish species (e.g., Dove and Fletcher, 2000).

In Turkey, the common carp is native to the northernmost areas of Anatolia and Thrace (Memiş and Kohlmann, 2006; Vilizzi, 2012) but 'naturalized' (sensu Copp et al., 2005) elsewhere following translocations for fisheries and aquaculture (Innal and Erk'akan, 2006; Çetinkaya, 2010). Indeed, the common carp represents the most important species for inland fisheries of Turkey, along with the tarek (or 'inci kefali') *Alburnus tarichi* (Güldenstädt, 1814) (Turkish Statistical Institute, 2012). However, current lack of a national legislation protocol

for the management of nonnative and translocated species in general has recently spurred interest in a reappraisal of the status of common carp in the region (Önsoy et al., 2011), along with an evaluation of its potential for further establishment and dispersal (Tarkan et al., 2014).

Apart from 2 reviews on the cestode *Ligula intestinalis* (Innal et al., 2007) and hirudinean annelids (Arslan and Öktener, 2012), 2 main checklists of common carp parasites in water bodies of Turkey are available for the 1964–2003 (Öktener, 2003) and the 2004–2008 (Kayis et al., 2009) periods, together with a more recent checklist for Platyhelminthes for the 1964–2014 period (Öktener, 2014). An additional checklist is also available for the 1964–2008 period (Öktener et al., 2009), even though it includes parasites recorded under both natural and farming/aquaculture conditions.

The aim of this study was to provide an updated checklist for the 1964–2014 period of the parasites of common carp living under natural conditions in water bodies of Turkey. Parasite occurrence both on individual fish and across water bodies is reported, and the validity of some previous identifications is critically reviewed. As part of ongoing research on the ecology of common carp

* Correspondence: lorenzo.vilizzi@gmail.com

in Turkey (Vilizzi et al., 2013, 2014a, 2014b, 2015), the ultimate objective of the present synopsis is to help inform better management options for this species through provision of state-of-the-art review material.

2. Material and methods

Data on common carp parasites in Turkey were obtained from published literature sources, including peer-reviewed papers, thesis dissertations, conference proceedings, and, occasionally, reports. Notably, inclusion of studies was limited to those reporting occurrence of parasites on common carp under natural conditions from one or more water bodies. For this reason, studies carried out on common carp held in ornamental ponds (Pişkin and Utuk, 2008) or under farming/aquaculture conditions (Özer and Erdem, 1998, 1999; Selver et al., 2013) were excluded from review. For each taxon (i.e. species or unidentified species, plus mollusk larvae or *Glochidia* sp.), the corresponding phylum, class, order, and family were recorded (after <http://www.ncbi.nlm.nih.gov/guide/taxonomy/>; accessed 13 February 2015). Whenever provided, the percentage occurrence of a taxon in the sample of fish examined was also noted or otherwise computed as ratio of infected:examined fish. Finally, water bodies for which parasite data were retrieved were categorized as man-made reservoirs, natural lakes, and water courses.

Differences among water body types in mean number of taxa (= richness) were analyzed by permutational univariate analysis of variance (PERANOVA), and differences in parasite composition (phylum, class, order,

family, and taxon level) were analyzed by permutational multivariate analysis of variance (PERMANOVA). For taxon richness, following normalization of the data, a Euclidean distance was used to produce a distance matrix and differences among water body type were tested based on a single-factor (i.e. water body type) experimental design. For parasite composition, a Bray–Curtis dissimilarity measure was applied to the presence/absence data for each taxonomic level and the resulting distance matrices were each tested based on the above design. Statistical analyses were carried out in PERMANOVA+ for PRIMER v.6 (Anderson et al., 2008), with 9999 permutations of the raw data. Briefly, the advantage of PERANOVA and PERMANOVA over traditional parametric analysis of variance is that the stringent assumptions of (multivariate) normality and homoscedasticity/sphericity in the data, which very often prove unrealistic when dealing with ecological datasets, are considerably relaxed (Anderson, 2001a, 2001b).

3. Results

In total, 52 studies were reviewed that investigated parasites on common carp under natural conditions. However, the studies by Burgu et al. (1988), Oğuz et al. (1991), and Erkul (1997) were excluded from analysis due to their reporting occurrence and number of parasites pooled over different water bodies (hence, without distinction among the same). Of the 49 studies preliminarily retained, 45 reported occurrence of parasites (Table), whereas the remaining 4 did not record any presence of parasites (i.e. Cengizler et

Table. Checklist of the parasites of common carp from water bodies of Turkey (with indication of source study).

	Man-made reservoirs										Natural lakes														
	Çamlidere	Doğancı	Emre	Emre	Karacaören I	Karacaören II	Karakaya	Keban	Keban	Kepez I	Kunduzlar	Sevir	Tahtalı	Yamula	Akşehir	Akşehir	Antakya	Bafa	Bektasaga	Beysehir	Çapalı	Çavuşcu	Çavuşcu	Dalyan Lagoon	Durusu
	1	2	3	4	5	6	7	8	9	10	11	12	13	14	15	16	17 ⁴	18	19 ⁵	20	21	22	23	24	25
Kingdom PROTOZOA																									
Phylum CILIOPHORA																									
Class OLIGOHYMENOPHOREA																									
<i>Apiosoma piscicola</i> (Blanchard, 1885)																				✓					
<i>Epistylis</i> sp.																				✓					
<i>Ichthyophthirius multifiliis</i> Fouquet, 1876																									
<i>Trichodina</i> sp.																									
<i>T. acuta</i> Lom, 1961																									✓
<i>T. mutabilis</i> Kozubsky & Migala, 1968																									✓
<i>T. nigra</i> Lom, 1960															✓										✓
Class PHYLLOPHARYNGEA																									
<i>Chilodonella</i> sp.																									
Kingdom METAZOA																									
Phylum ACANTHOCEPHALA																									
Class EOACANTHOCEPHALA																									
<i>Neochinorhynchus</i> sp.																									
<i>N. rutili</i> (Müller, 1780)																									✓
Class PALAEACANTHOCEPHALA																									
<i>Acanthocephalus clavula</i> (Dujardin, 1845)																									

Table. (Continued).

	Man-made reservoirs										Natural lakes														
	Çamlidere	Doğancı	Emre	Emre	Karacaören I	Karacaören II	Karakaya	Keban	Keban	Kepez I	Kunduzlar	Selevir	Tahtalı	Yamula	Akşehir	Akşehir	Antakya	Bafa	Bektasığa	Beysehir	Çapalı	Çavuşcu	Çavuşcu	Dalyan Lagoon	Durusu
	1	2	3	4	5	6	7	8	9	10	11	12	13	14	15	16	17 ⁴	18	19 ⁵	20	21	22	23	24	25
Phylum ANELLIDA																									
Class HIRUDINEA																									
<i>Hemiclepsis marginata</i> (Müller, 1774)																		√			√				
<i>Hirudo medicinalis</i> L., 1758 ²																					√				
<i>Piscicola geometra</i> (L., 1758)																							√		
Phylum ARTHROPODA																									
Class ARACHNIDA																									
<i>Unionicola</i> sp. ²																									
Class MAXILLOPODA																									
<i>Argulus foliaceus</i> L., 1758				√	√	√					√							√	√			√	√		
<i>Ergasilus sieboldi</i> Nordmann, 1832																									
<i>Lernaea cyprinacea</i> L., 1758						√							√											√	
Phylum MOLLUSCA																									
Class BIVALVIA																									
<i>Glochidium</i> sp.																									
Phylum NEMATODA																									
Class ADENOPHOREA																									
<i>Pseudocapillaria tomentosa</i> (Dujardin, 1843)																									
Class SECERNENTEA																									
<i>Contracaecum</i> sp.													√												
<i>Rhabdochona denudata</i> (Dujardin, 1845) ²																									
Phylum PLATYHELMINTES																									
Class CESTODA																									
<i>Bothriocephalus</i> sp.																									
<i>B. acheilognathi</i> Yamaguti, 1934					√	√			√		√	√									√				
<i>Caryophyllaeus</i> sp.																									
<i>C. brachycollis</i> Janiszewska, 1951																	√								
<i>C. fimbriceps</i> Annenkova-Khlopina, 1919																									
<i>C. laticeps</i> (Pallas, 1781)					√	√				√		√									√				√
<i>Khawia sinensis</i> Hsü, 1935 ³							√		√																
<i>Ligula</i> sp.																									
<i>L. intestinalis</i> (L., 1758)	√				√																				
<i>Paradilepis scolecina</i> (Rudolphi, 1819) ²															√										
<i>Proteocephalus</i> sp.																									
Class MONOGENEA																									
<i>Dactylogyrus</i> sp.																									
<i>D. anchoratus</i> (Dujardin, 1845)						√															√				
<i>D. chalcaburni</i> (Dogiel & Bychovsky, 1934) ^{1,2}																									
<i>D. extensus</i> Müller & van Cleave, 1932		√	√								√	√	√			√					√			√	√
<i>D. minutus</i> Kulwiec, 1927					√	√		√													√				
<i>D. vastator</i> Nybelin, 1924														√											
<i>Gyrodactylus</i> sp.				√																					
<i>G. cyprini</i> Diarova, 1964 ¹																									
<i>G. elegans</i> Nordmann, 1832 ²												√				√									
<i>G. scardinii</i> Malmberg, 1964 ²																									
<i>Paradiplozoon</i> sp.																									
<i>P. homoion</i> (Bychowsky & Nagibina, 1959)										√															
Class TREMATODA																									
<i>Clinostomum complanatum</i> (Rudolphi, 1814)																									
<i>Diplostomum</i> sp.										√															
<i>D. spathaceum</i> (Rudolphi, 1819)																									
<i>Posthodiplostomum cuticola</i> (Nordmann, 1832)																									
<i>Tylodelphys clavata</i> (von Nordmann, 1832)																									

¹ Taxon not previously reviewed for Turkey (i.e. Öktener, 2003, 2014; İnnal et al., 2007; Kayis et al., 2009; Arslan and Öktener, 2012).

² Taxon not previously reported in either Europe (Baruš et al., 2002) or North America (Hoffmann, 1999).

³ Likely erroneous identification in source study for *K. armeniaca* (Cholodkovsky, 1915).

⁴ Lake Antakya (Lake of Antioch) or Lake Amik (Hatay Province) was a large freshwater body that was drained between the 1940s and 1970s. Information on parasites of common carp from this water body is therefore retained in the present study only for historical purposes and consistency with previous reviews (i.e. Öktener, 2003, 2014; Kayis et al., 2009).

⁵ Fully scaled and mirror variants.

Source studies: (1) İnnal et al. (2007); (2) Aydoğdu and Altunel (2002); (3) Öztürk (2011a); (4) Öztürk (2012); (5) Kır et al. (2004); (6) Kır et al. (2013); (7) Barata and Dörtücü (2014); (8) Sağlam (1992); (9) Dörtücü and İspir (2005); (10) Soylu and Emre (2007); (11) Öztürk (2011b); (12) Öztürk and Bulut (2006); (13) Karakişi and Demir (2012); (14) Kılınçaslan (2009); (15) Buhurcu and Öztürk (2007); (16) Kartal and Öztürk (2009); (17) Paperna (1964); (18) Geldiay and Balık (1974); (19) Özer and Erdem (1999); (20) Tekin-Özan et al. (2008); (21) Ceylan (2002); (22) Öktener et al. (2007); (23) Alaş et al. (2010); (24) Aydoğdu et al. (2001); (25) Soylu (2009).

Table. (Continued).

	Natural lakes										Water courses															
	26	27	28	29	30	31	32	33	34	35	18	36	37	25	38	39	40	1	42	18	18	41	43	44 ⁴	45	
Kingdom PROTOZOA																										
Phylum CILIOPHORA																										
Class OLIGOHYMENOPHOREA																										
<i>Apiosoma piscicola</i> (Blanchard, 1885)																										
<i>Epistylis</i> sp.																										
<i>Ichthyophthirius multifiliis</i> Fouquet, 1876																										√
<i>Trichodina</i> sp.															√											
<i>T. acuta</i> Lom, 1961																										
<i>T. mutabilis</i> Kozubsky & Migala, 1968																										
<i>T. nigra</i> Lom, 1960																										√
Class PHYLLOPHARYNGEA																										
<i>Chilodonella</i> sp.															√											
Kingdom METAZOA																										
Phylum ACANTHOCEPHALA																										
Class EOACANTHOCEPHALA																										
<i>Neoechinorhynchus</i> sp.																										
<i>N. rutili</i> (Müller, 1780)				√	√																					√
Class PALAEACANTHOCEPHALA																										
<i>Acanthocephalus clavula</i> (Dujardin, 1845)																										√
Phylum ANELLIDA																										
Class HIRUDINEA																										
<i>Hemiclepsis marginata</i> (Müller, 1774)															√											
<i>Hirudo medicinalis</i> L., 1758 ²																										
<i>Piscicola geometra</i> (L., 1758)																										
Phylum ARTHROPODA																										
Class ARACHNIDA																										
<i>Unionicola</i> sp. ²																										
Class MAXILLOPODA																										
<i>Argulus foliaceus</i> L., 1758		√			√			√		√												√	√			√
<i>Ergasilus sieboldi</i> Nordmann, 1832																										
<i>Lernaea cyprinacea</i> L., 1758																										
Phylum MOLLUSCA																										
Class BIVALVIA																										
<i>Glochidium</i> sp.																										
Phylum NEMATODA																										
Class ADENOPHOREA																										
<i>Pseudocapillaria tomentosa</i> (Dujardin, 1843)																										
Class SECERNENTEA																										
<i>Contraecum</i> sp.																										
<i>Rhabdochona denudata</i> (Dujardin, 1845) ²																										√
Phylum PLATYHELMINTES																										
Class CESTODA																										
<i>Bothriocephalus</i> sp.																										
<i>B. acheilognathi</i> Yamaguti, 1934		√		√		√	√		√	√				√							√					√
<i>Caryophyllaeus</i> sp.																									√	√
<i>C. brachycollis</i> Janiszewska, 1951																										
<i>C. fimbriceps</i> Annenkova-Khlopina, 1919																										
<i>C. laticeps</i> (Pallas, 1781)				√		√		√	√	√				√												√
<i>Khawia sinensis</i> Hsü, 1935 ³																										
<i>Ligula</i> sp.																										
<i>L. intestinalis</i> (L., 1758)																										
<i>Paradilepis scolecina</i> (Rudolphi, 1819) ²																										
<i>Proteocephalus</i> sp.																										√

Table. (Continued).

	Natural lakes										Water courses															
	Eber	Hazar	Iznik	Iznik	Iznik	Karamik	Kovada	Kovada	Manyas (Kus)	Manyas (Kus)	Marmara	Mogan	Sapanca	Sapanca	Sigirci	Terkos	Uluabat (Apoluyont)	Aksu	Aras	Büyük Menderes	Gediz	Kızılırmak	Porsuk	Seyhan	Creeks (Van region)	
Class MONOGENEA																										
<i>Dactylogyrus</i> sp.											✓															
<i>D. anchoratus</i> (Dujardin, 1845)																										
<i>D. chalcarburni</i> (Dogiel & Bychovsky, 1934) ^{1,2}																							✓			
<i>D. extensus</i> Müller & van Cleave, 1932	✓	✓			✓	✓			✓				✓	✓	✓	✓	✓						✓			
<i>D. minutus</i> Kulwiec, 1927								✓																		
<i>D. vastator</i> Nybelin, 1924																									✓	
<i>Gyrodactylus</i> sp.													✓		✓											
<i>G. cyprini</i> Diarova, 1964 ¹																						✓				
<i>G. elegans</i> Nordmann, 1832 ²	✓					✓										✓				✓				✓		
<i>G. scardinii</i> Malmberg, 1964 ²									✓																	
<i>Paradiplozoon</i> sp.														✓												
<i>P. homoion</i> (Bychowsky & Nagibina, 1959)																										
Class TREMATODA																										
<i>Clinostomum complanatum</i> (Rudolphi, 1814)															✓											
<i>Diplostomum</i> sp.													✓		✓											
<i>D. spathaceum</i> (Rudolphi, 1819)																✓										
<i>Posthodiplostomum cuticola</i> (Nordmann, 1832)	✓																									
<i>Tylodelphys clavata</i> (von Nordmann, 1832)															✓											

¹ Taxon not previously reported in checklists and reviews for Turkey (i.e. Öktener, 2003; İnnal et al., 2007; Kayis et al., 2009; Arslan and Öktener, 2012).

² Taxon not previously reported for Europe (Baruš et al., 2002) or North America (Hoffmann, 1999).

³ Likely erroneous identification in source study for *K. armeniaca* (Cholodkovsky, 1915).

⁴ Mirror variant.

Source studies: (1) İnnal et al. (2007); (18) Geldiay and Balık (1974); (26) Öztürk (2005); (27) Aksoy et al. (2006); (28) Türkmen and Tüzer (1992); (29) Aydoğdu et al. (1997); (30) Aydoğdu and Altunel (2002); (31) Kutlu and Öztürk (2006); (32) Becer and Kara (1998); (33) Kır and Tekin Özcan (2007); (34) Öztürk and Altunel (2006); (35) Öztürk (2010); (36) Sönmez (1996); (37) Uzunay and Soylu (2006); (38) Çolak (2013); (39) Demirtaş and Şenel (2012); (40) Oğuz et al. (1996); (41) Öztürk and Özer (2014); (42) Aslan (2009); (43) Yetim (1985); (44) Cengizler et al. (2001); (45) Topçu and Taşçı (1993).

al., 1991; Özbek and Öztürk, 2010; Öztürk, 2011c; Turgut et al., 2011). The 45 studies in total retained for review provided data from 41 water bodies, which comprised 12 man-made reservoirs, 21 natural lakes, and 8 water courses (Table). Notably, parasites of the mirror scalation variant were reported from Seyhan Stream (Cengizler et al., 2001) and from Lake Bektaşağa (Özer and Erdem, 1999), where this variant occurred together with the fully scaled variant. The latter variant was sampled from all other water bodies.

Forty-one different taxa in total (including molluscan *Glochidium* sp.) were recorded. Among the Protozoa, Ciliophora (ciliates) was represented by 5 identified and 2 unidentified species (notation hereafter: 5, 2); among the Metazoa, Platyhelminthes (flatworms) was the dominant phylum including Cestoda (7, 4), Monogenea (9, 3), and Trematoda (4, 1), followed by Arthropoda (3, 1), Acanthocephala (2, 1), Nematoda (2, 1), Annelida (3 species), and Mollusca (1 'taxon').

The trematode *Diplostomum spathaceum* had the highest occurrence on the fish examined (84.0%), followed by the monogenean flatworm *Dactylogyrus extensus*, the ciliate *Trichodina mutabilis*, the arthropod *Ergasilus sieboldi*, the trematode *Diplostomum* sp., and the acanthocephalan *Acanthocephalus clavula*, which were all parasitizing >50%

of the fish (Figure 1). Across water bodies, *Dactylogyrus extensus* had the highest occurrence of all taxa (46.5%) and was followed by the arthropod *Argulus foliaceus* and the cestodes *Bothriocephalus acheilognathi* and *Caryophyllaeus laticeps*, which were present in >20% of the water bodies (Figure 2).

The monogeneans *Dactylogyrus chalcarburni* and *Gyrodactylus cyprini*, both from the Kızılırmak Delta (Öztürk and Özer, 2014), had not been previously reported for Turkey. In addition, 7 taxa in total, including the hirudinean annelid *Hirudo medicinalis*, the arachnid *Unionicola* sp., the secernentean nematode *Rhabdochona denudata*, the cestode *Paradilepis scolecina*, and the monogeneans *Dactylogyrus chalcarburni*, *Gyrodactylus elegans*, and *Gyrodactylus scardinii*, were not present either in the European (cf. *C. c. carpio*, the subspecies present in Turkey) or North American parasite checklists (Table).

There were no statistically significant differences among water bodies in taxon richness ($F_{2,38}^{\#} = 1.33$, $P^{\#} = 0.285$; $\#$ = permutational value), nor were there any differences in parasite composition at either the phylum ($F_{2,38}^{\#} = 0.73$, $P^{\#} = 0.751$), class ($F_{2,38}^{\#} = 0.94$, $P^{\#} = 0.556$), order ($F_{2,38}^{\#} = 1.09$, $P^{\#} = 0.284$), family ($F_{2,38}^{\#} = 1.03$, $P^{\#} = 0.409$), or taxon ($F_{2,38}^{\#} = 0.96$, $P^{\#} = 0.593$) level.

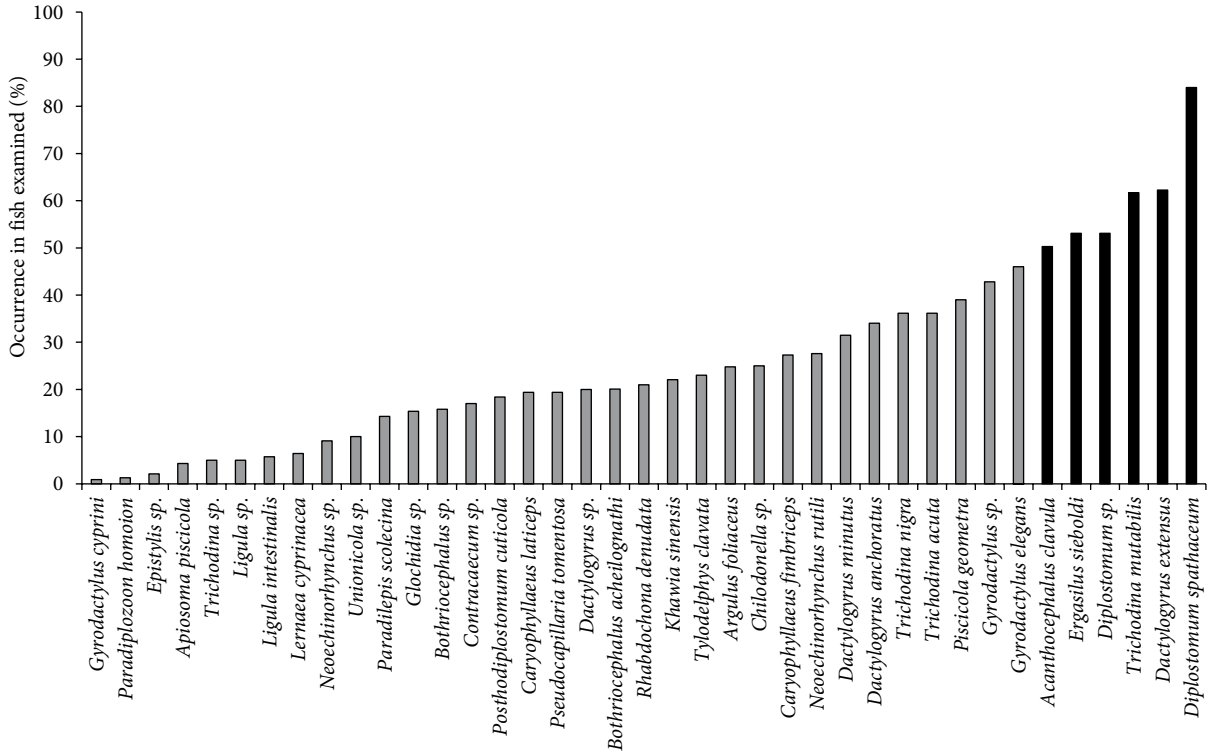


Figure 1. Percentage occurrence of parasite taxa of common carp (proportion of fish examined) from water bodies of Turkey. Taxa parasitizing more than 50% of individuals are in black. See also the Table.

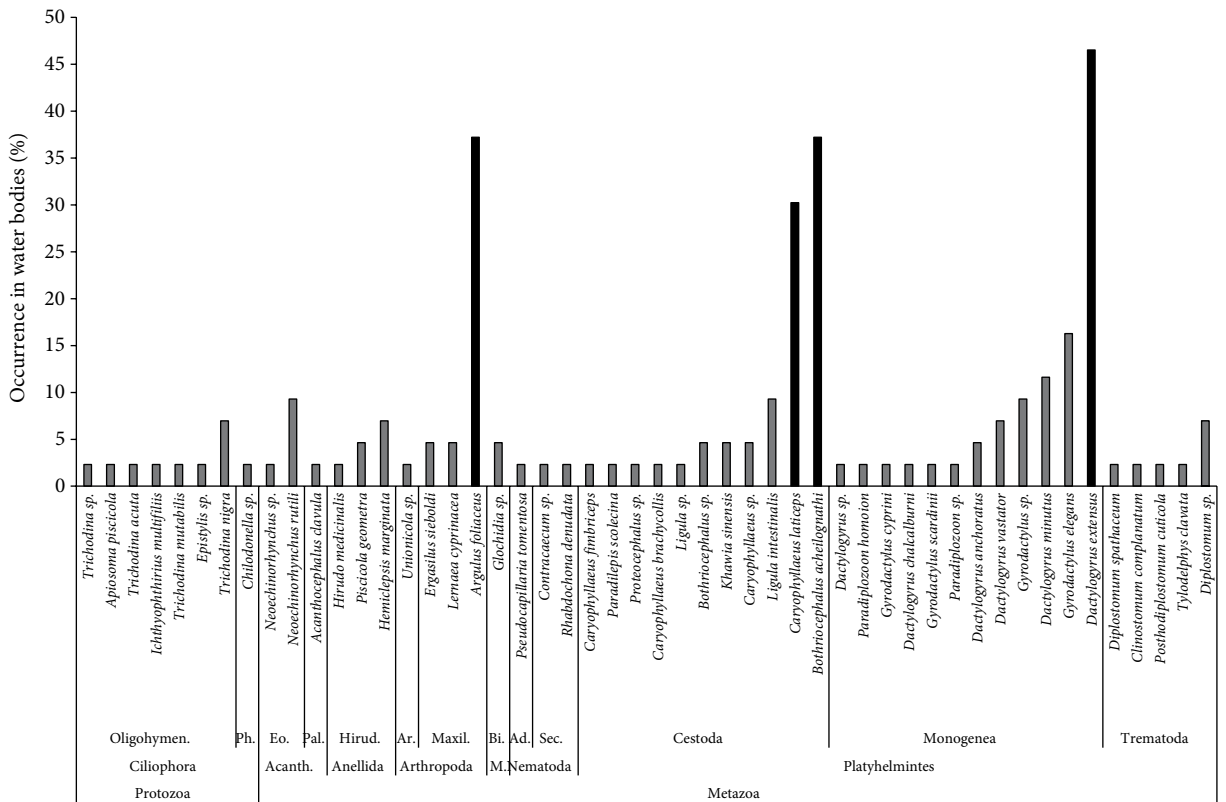


Figure 2. Percentage occurrence of parasite taxa of common carp from water bodies of Turkey. Taxa occurring in more than 20% of the water bodies in black. See also the Table.

4. Discussion

Based on this review, 41 different taxa of common carp parasites (including *Glochidium* sp., but excluding unidentified species for which at least one species was identified) have been recorded in water bodies of Turkey in the 1964–2014 period. The previously reported dominance of ciliates among protozoans (Kayis et al., 2009) and of flatworms among metazoans (Öktener, 2003) was confirmed in terms of occurrence both on fish and across water bodies.

The absence of some taxa from the checklists for Europe (Baruš et al., 2002) and North America (Hoffmann, 1999), where introduced common carp is of European origin (e.g., Panek, 1987), can be explained by the location of Turkey at the frontier between Asia and Europe (Tarkan et al., 2014), with the sea straits of İstanbul and the Dardanelles separating the zoogeographical provinces of Thrace and Anatolia (Kosswig, 1955). On the other hand, the present data on the parasite fauna of common carp in Turkey were in agreement with those of Molnár (2009), who reported consistent differences with the parasite fauna of the far eastern individuals of the common carp (Balon, 1995; Chistiakov and Voronova, 2009).

Because the focus of this study was on parasites occurring on common carp under natural conditions, taxa reported under farming and aquaculture (cf. Jeney and Jeney, 1995; Baruš et al., 2002) were not included, and this limited to some extent possible comparisons with other review studies for Turkey (see Öktener et al., 2009). Furthermore, the very limited information on parasites affecting the mirror relative to the fully scaled common carp prevents an in-depth analysis of possible differences in parasitic fauna between the 2 variants. In this respect, the only study explicitly investigating this topic reported similar infestation rates by *Dactylogyrus extensus* on both variants coexisting in Lake Bektaşağa (Özer, 2002), and the 6 parasite species reported for mirror carp from Seyhan Stream (Cengizler et al., 2001) were all recorded for the fully scaled variant in other water bodies (Table). However, it is also argued that distinction of parasites affecting mirror and fully scaled variants of feral common carp (sensu Balon, 1995) may not be as critical as that between domesticated and wild/feral forms (see Baruš et al., 2002). This is because domesticated common carp, when released under natural conditions, is known to revert quickly to its feral form, resembling its wild ancestor (Balon, 1995). Notably, this occurs regardless of scale cover, which is the result of variation in 2 unlinked autosomal loci, each with 2 alleles (Kirpichnikov, 1999) and of no taxonomic value (e.g., Balon, 1995; Vilizzi, 2012).

The original record of *Khawia armeniaca* (Cholodkovsky, 1915) from Keban Lake (Dörücü and İspir, 2005) was likely a misidentification of *Khawia sinensis*, which instead commonly parasitizes common

carp (Scholz et al., 2011). Additionally, 4 additional dubious identifications were provisionally excluded from the present checklist pending further investigation. Specifically, the monogenean *Dactylogyrus ancylostylus* Chien, 1974, from Keban Reservoir (Sağlam, 1992) is known to be a specific parasite of the North American cyprinid genus *Nocomis* (Chien, 1974). Similarly, the monogenean *Dactylogyrus phoxini* Malewitszkaja, 1949 from Lake Sapanca (Uzunay and Soylu, 2006; Soylu, 2009) has Eurasian minnow *Phoxinus phoxinus* as its specific host (Chubb, 1977). The dinoflagellate *Piscinoodinium pillulare* (Schäperclaus, 1954) from Keban Reservoir (as *Oodinium pillularis* Schäperclaus: Sağlam, 1992) is known to affect common carp only under aquarium conditions with other ornamental fishes (Lom, 1981). Finally, the cestode *Schistocephalus* sp. from Seyhan River (Cengizler et al., 2001; Öktener, 2014) is known not to be able to affect cyprinids (e.g., Bräten, 1966).

The lack of differences among water bodies in terms of both parasite richness and composition indicates overall homogeneity. This is in agreement with recent findings on the biology/ecology of common carp in Anatolia, including weight–length relationships and condition factors (Vilizzi et al., 2013), natural diet composition (Vilizzi et al., 2014a), reproductive biology (Vilizzi et al., 2014b), and age–growth patterns (Vilizzi et al., 2015), all of which can be explained by the relatively long-term establishment of the species across the region. Management options for common carp should therefore take into consideration the present findings, especially in regard to the possible advantage provided by the existence of a limited number of population dynamics parameters applicable to common carp stocks at the regional level. Finally, the potential risks posed by actual and potential translocations of common carp parasites to water bodies of Turkey and their possible spread to native fish species require further investigation (e.g., Kennedy, 1993; Dove and Fletcher, 2000).

Acknowledgments

The authors are grateful to Baran Yoğurtçuoğlu, Fatma Kübra Erbay, Cüneyt Solak, Ünal Erdem, Naime Arslan, Ruşen Ustaoglu, Oğuz Öztürk, Ali Aydoğdu, and İbrahim Cengizler for assistance with literature retrieval and organization. This study, which was originally inspired by discussions among the authors at the International Workshop on ‘New approaches for assessing the impacts of non-native freshwater fishes in the Mediterranean region’ held at Muğla University (Muğla, Turkey: 26–29 October 2010), was finalized through funding to LV from the 2221 Fellowship Program for Visiting Scientists on Sabbatical Leave provided by the Scientific and Technological Research Council of Turkey (TÜBİTAK) and the Department of Science Fellowships and Grant Programs (BİDEB).

References

- Aksoy S, Saglam N, Dorucu M (2006) External parasites of three cyprinid fish species from Lake Hazar in Turkey. *Indian Vet J* 83: 100–101.
- Alaş A, Öktener A, Solak K (2010). A study on the morphology of *Argulus foliaceus* Lin., 1758 (Crustacea; Branchiura) procured from Çavuşcu Lake (Central Anatolia-Turkey) with scanning electron microscopy. *Turk J Biol* 34: 147–151.
- Anderson MJ (2001a). Permutation tests for univariate or multivariate analysis of variance and regression. *Can J Fish Aquat Sci* 58: 626–639.
- Anderson MJ (2001b). A new method for non-parametric multivariate analysis of variance. *Austral Ecol* 26: 32–46.
- Anderson MJ, Gorley RN, Clarke KR (2008). PERMANOVA+ for PRIMER: Guide to Software and Statistical Methods. Plymouth, UK: PRIMER-E Ltd.
- Arslan N, Öktener A (2012). A general review of parasitic Annelida (Hirudinea) recorded from different habitats and hosts in Turkey. *Turk J Zool* 36: 141–145.
- Aslan B (2009). Ağrı ili Murat Nehri ile Erzurum ili Aras Nehri'nden yakalanan bazı balıkların endohelminthlerinin araştırılması. MSc, Atatürk University, Erzurum, Turkey (in Turkish).
- Aydoğdu A, Altunel FN (2002). Doğançı Baraj Gölü'nden (Bursa) yakalanan bazı balıklarda kaydedilen helminthler. *Türk Parazitoloj Derg* 26: 87–92 (in Turkish).
- Aydogdu A, Kostadinova A, Fernandez M (2003). Variations in the distribution of parasites in the common carp, *Cyprinus carpio*, from Lake Iznik, Turkey: population dynamics related to season and host size. *Helminthologia* 40: 33–40.
- Aydogdu A, Öztürk MO, Oguz MC, Altunel F (2001). Investigations on metazoan parasites of common carp (*Cyprinus carpio* L. 1758) in Dalyan Lagoon, Karacabey, Turkey. *Acta Vet-Beograd* 51: 351–358.
- Aydoğdu A, Yıldırımhan HS, Altunel FN (1997). İznik Gölünde yaşayan balıkları (*Cyprinus carpio* L.) üzerinde yaşayan bazı metazoan parazitler üzerine araştırmalar. *Türk Parazitoloj Derg* 21: 442–445 (in Turkish).
- Balon EK (1995). The common carp, *Cyprinus carpio*: its wild origin, domestication in aquaculture, and selection as colour nishikigoi. *Guelph Ichthyol Rev* 3: 1–55.
- Balon EK (2006). The oldest domesticated fishes, and the consequences of an epigenetic dichotomy in fish culture. *Aqua J Ichth Aquat Biol* 11: 47–86.
- Barata S, Dörücü M (2014). Karakaya Baraj Gölü Kömürhan bölgesinden yakalanan bazı balıklarda endohelminthlerin araştırılması. *Fırat Üniv Fen ve Müh Bil Derg* 26: 59–68 (in Turkish).
- Baruš V, Peňáz M, Kohlmann K (2002). Cyprinidae 2. Part III: *Carassius* to *Cyprinus*. Gasterosteidae. In: Bănărescu PM, Paepke HJ, editors. *The Freshwater Fishes of Europe*. Vol. 5/III. Wiebelsheim, Germany: Aula-Verlag, pp. 85–179.
- Becer ZA, Kara D (1998). Kovada Gölü'nden yakalanan sazan (*Cyprinus carpio* L. 1758) balıklarının populasyon yapısı ve parazitleri üzerine bir araştırma. *Türk Parazitoloj Derg* 22: 199–203 (in Turkish).
- Bråten T (1966). Host specificity in *Schistocephalus solidus*. *Parasitology* 4: 657–664.
- Buhurcu Hİ, Öztürk MO (2007). Akşehir Gölü'ndeki *Cyprinus carpio* Linnaeus, 1758 ve *Alburnus nasreddini* Battalgil, 1944'nin endoparazit faunası üzerine bir araştırma. *Fırat Üniv Fen ve Müh Bil Derg* 19: 109–113 (in Turkish).
- Burgu A, Oğuz T, Körting W, Güralp N (1988). İç Anadolu'nun bazı yörelerinde tatlısu balıklarının parazitleri. *Etlik Vet Mikrob Derg* 6: 143–166 (in Turkish).
- Cengizler İ, Aytac N, Sahan (Azizoğlu) A, Ozak AA, Genç E (2001). Ecto–endo parasite investigation on mirror carp (*Cyprinus carpio* L., 1758) captured from the River Seyhan, Turkey. *E.Ü. Su Ürün Derg* 18: 87–90.
- Cengizler İ, Sarıhan E, Çevik C (1991). Almus (Tokat) Baraj Gölünde yaşayan cyprinidlerde ligulosis araştırması. In: Ege Üniv Su Ürünleri Fakültesi, Eğitimin 10. Yılında Su Ürünleri Sempozyumu. İzmir, Turkey: Ege University, pp. 371–375 (in Turkish).
- Çetinkaya O (2010). Distribution, ecology and use of common carp (*Cyprinus carpio*) in Turkey. In: 1st International Symposium of Fisheries and Fishing Tourism, Zbornik Radova Proceedings. Boračko Lake, Bosnia and Herzegovina; 23–24 June 2010. Boračko Lake, Bosnia and Herzegovina: Center for Fisheries “Neretva” Konjic, pp. 173–188.
- Ceylan Y (2002). Çapalı gölü (Dinar-Afyon) balıklarının parazitolojik yönden incelenmesi. MSc, Süleyman Demirel University, Isparta, Turkey (in Turkish).
- Chien SM (1974). Dactylogyrids from North American cyprinids of the genus *Nocomis*. The *Bellicus* group. *J Parasitol* 60: 585–594.
- Chistiakov DA, Voronova NV (2009). Genetic evolution and diversity of common carp *Cyprinus carpio* L. *Cent Eur J Biol* 4: 304–312.
- Chubb JC (1977). Seasonal occurrence of helminths in freshwater fishes. Part 1. Monogenea. In: Dawes B, editor. *Advances in Parasitology*. Vol. 15. London, UK: Academic Press, pp. 133–200.
- Çolak HS (2013). Metazoan parasites of fish species from Lake Sığircı (Edirne, Turkey). *Turk J Vet Anim Sci* 37: 200–205.
- Copp GH, Bianco PG, Bogutskaya NG, Erős T, Falka I, Ferreira MT, Fox MG, Freyhof J, Gozlan RE, Grabowska J et al. (2005). To be, or not to be, a non-native freshwater fish? *J Appl Ichthyol* 21: 242–262.
- Demirtaş M, Şenel Ü (2012). Terkos Gölü'ndeki sazan (*Cyprinus carpio* L. 1758)'da gölüren ektoparazitlerin mevsimsel dağılımları. *Erciyes Üniv Fen Bilim Enst Derg* 15: 52–58 (in Turkish).
- Dörücü M, İspir Ü (2005). Keban Baraj Gölü'nden avlanabilen balık türlerinde iç parazitler hastalıklarının incelenmesi. *Fırat Üniv Fen ve Mühendislik Bilim Derg* 17: 400–404 (in Turkish).

- Dove ADM, Fletcher AS (2000). The distribution of the introduced tapeworm *Bothriocephalus acheilognathi* in Australian freshwater fishes. *J Helminthol* 74: 121–128.
- Erkul BS (1997). Ankara yöresindeki tatlısu balıklarında görülen helmint enfeksiyonları. PhD, Ankara University, Ankara, Turkey (in Turkish).
- Geldiay R, Balık S (1974). Türkiye tatlı su balıklarında rastlanan başlıca iç ve dış parazitler. Ege Üniversitesi Fen Fakültesi Monografiler Serisi No. 14. İzmir, Turkey: Ege University (in Turkish).
- Hoffmann GL (1999). Parasites of North American Freshwater Fishes. 2nd ed. New York, NY, USA: Cornell University Press.
- Hoffmann RC (1995). Environmental change and the culture of common carp in medieval Europe. *Guelph Ichthyol Rev* 3: 57–85.
- Innal D, Erkakan F (2006). Effects of exotic and translocated fish species in the inland waters of Turkey. *Rev Fish Biol Fish* 16: 39–50.
- Innal D, Keskin N, Erkakan F (2007). Distribution of *Ligula intestinalis* (L.) in Turkey. *Turk J Fish Aquat Sci* 7: 19–22.
- Jeney Z, Jeney G (1995). Recent achievements in studies on diseases of common carp (*Cyprinus carpio* L.). *Aquaculture* 129: 397–420.
- Karakışi H, Demir S (2012). Metazoan parasites of the common carp (*Cyprinus carpio* L., 1758) from Tahtalı Dam Lake (İzmir). *Türk Parazitol Derg* 36: 174–177.
- Kartal K, Öztürk MO (2009). Akşehir Gölü (Konya)'ndeki bazı balıkların (*Cyprinus carpio* Linnaeus, 1758; *Cobitis simplicispinna* Hanko, 1924) ektoparazit faunası üzerinde araştırmalar. *Türk Parazitol Derg* 33: 101–106 (in Turkish).
- Kayis S, Özcelep T, Capkin E, Altınok I (2009). Protozoan and metazoan parasites of cultured fish in Turkey and their applied treatments. *Bamidgeh* 61: 93–102.
- Kennedy CR (1993). Introductions, spread and colonization of new localities by fish helminth and crustacean parasites in the British Isles: a perspective and appraisal. *J Fish Biol* 43: 287–301.
- Kılınçaslan MO (2009). Yamula Baraj Gölü(Kayseri)'nde yaşayan bazı ekonomik balık türlerinde parazitolojik incelemeler. MSc, Çukurova University, Adana, Turkey (in Turkish).
- Kır İ, Ayvaz Y, Barlas M, Tekin Özan S (2004). Karacaören I Baraj Gölü'nde yaşayan sazan (*Cyprinus carpio* L., 1758)'lardaki parazitlerin mevsimsel dağılımları ve etkileri. *Türk Parazitol Derg* 28: 45–49 (in Turkish).
- Kır İ, Samancı İ, Erdoğan M (2013). The relationship between growth and parasites in carp (*Cyprinus carpio* L., 1758) inhabiting Karacaören II Dam Lake. *Pakistan J Zool* 45: 1451–1453.
- Kır İ, Tekin Özan S (2007). Helminth infections in common carp, *Cyprinus carpio* L., 1758 (Cyprinidae) from Kovada Lake (Turkey). *Türk Parazitol Derg* 31: 232–236.
- Kirpichnikov VS (1999). Genetics and Breeding of Common Carp. Paris, France: INRA.
- Kosswig C (1955). Zoogeography of the Near East. *Syst Biol* 4: 49–73.
- Kutlu HL, Öztürk MO (2006). Karamık Gölü (Afyonkarahisar)'deki *Cyprinus carpio* Linnaeus, 1758 (sazan)'nun metazoan parazitleri üzerinde anatomik, morfolojik ve ekolojik bir araştırma. *Ege Üniv Su Ürün Derg* 23: 389–393 (in Turkish).
- Lom J (1981). Fish invading dinoflagellates: a synopsis of existing and newly proposed genera. *Folia Parasitol* 28: 3–11.
- Memiş D, Kohlmann K (2006). Genetic characterization of wild common carp (*Cyprinus carpio* L.) from Turkey. *Aquaculture* 258: 257–262.
- Molnár K (2009). Data on the parasite fauna of the European common carp *Cyprinus carpio carpio* and Asian common carp *Cyprinus carpio haematopterus* support an Asian ancestry of the species. *AACL Bioflux* 2: 391–400.
- Oğuz MC (1991). Bursa yöresindeki bazı tatlı sulardan (Kodacere-Ekinli-Uluabat) yakalan sazan balığı (*Cyprinus carpio* L. 1758) ekto parazitleri üzerine bir araştırma. *Türk Parazitol Derg* 15: 103–110 (in Turkish).
- Oğuz MC, Öztürk MO, Altunel FN, Ay YD (1996). Uluabat (Apolyont) Gölünde yakalanan sazan balıkları (*Cyprinus carpio* L. 1758) üzerine parazitolojik bir araştırma. *Türk Parazitol Derg* 20: 97–103 (in Turkish).
- Öktener A (2003). A checklist of metazoan parasites recorded in freshwater fish from Turkey. *Zootaxa* 394: 1–28.
- Öktener A (2014). Revision of parasitic helminths reported in freshwater fish from Turkey with new records. *Transylv Rev Syst Ecol Res* 16: 1–56.
- Öktener A, Torcu Koç H, Erdoğan Z (2009). Fish/parasites interrelationships in Turkey: a review. *Ittiopatologia* 6: 121–139.
- Öktener A, Trilles JP, Leonardos I (2007). Five ectoparasites from Turkish fish. *Türk Parazitol Derg* 31: 154–157.
- Önsoy B, Filiz H, Tarkan AS, Bilge G, Tarkan AN (2011). Occurrence of non-native fishes in a small man-made lake (Lake Ula, Muğla): past, present, future perspectives. *Turk J Fish Aquat Sci* 11: 209–215.
- Özbek M, Öztürk MO (2010). Kunduzlar Baraj Gölü (Kırka, Eskişehir)'nde yaşayan bazı balıkların *Ligula intestinalis* plerocercoid L., 1758 enfeksiyonu üzerine araştırmalar. *Türk Parazitol Derg* 34: 112–117 (in Turkish).
- Özer A (2002). Co-existence of *Dactylogyrus anchoratus* Dujardin, 1845 and *D. extensus* Mueller & Van Cleave, 1932 (Monogenea), parasites of common carp (*Cyprinus carpio*). *Helmintologia* 39: 45–50.
- Özer A, Erdem O (1999). Ectoparasitic protozoa fauna of the common carp (*Cyprinus carpio* L., 1758) caught in the Sinop region of Turkey. *J Nat Hist* 32: 441–454.
- Özer A, Erdem O (1999). The relationship between occurrence of ectoparasites, temperature and culture conditions: a comparison of farmed and wild common carp (*Cyprinus carpio* L., 1758) in the Sinop region of northern Turkey. *J Nat Hist* 33: 483–491.

- Öztürk MO (2005). Eber Gölü (Afyon)'ndeki sazan (*Cyprinus carpio* L.)'ların metazoon parazitleri üzerine bir araştırma. *Türk Parazitol Derg* 29: 204–210 (in Turkish).
- Öztürk MO (2010). Manyas Gölü (Bandırma)'ndeki *Cyprinus carpio* L.'nin *Gyrodactylus* (Monogeneoidea, Platyhelminthes) enfeksiyonu üzerine bir araştırma. *Afyon Kocatepe Üniv Fen Bilim Derg* 2: 105–113 (in Turkish).
- Öztürk MO (2011a). Emre Baraj Gölü (Afyonkarahisar)'deki üç cyprinid balık türünün helmint faunası üzerine bir araştırma. *Afyon Kocatepe Üniv Fen Bilim Derg* 11: 23–29 (in Turkish).
- Öztürk MO (2011b). Kunduzlar Baraj Gölü (Kırka, Eskişehir)'ndeki balıkların sestod faunası üzerine incelemeler. *Afyon Kocatepe Üniv Fen Bilim Derg* 11: 51–56 (in Turkish).
- Öztürk MO (2011c). Manyas Gölü (Balıkesir)'nde yaşayan bazı balıkların *Paradiplozoon homoion* (Monogenea, Diplozoidae) enfeksiyonu üzerine araştırmalar. *Fırat Üniv Fen Bilim Derg* 23: 57–61 (in Turkish).
- Öztürk MO (2012). Emre Baraj Gölü (Afyonkarahisar)'ndeki üç cyprinid balık türünün *Argulus foliaceus* enfeksiyonu üzerine araştırma. *İstanbul Üniv Vet Fak Derg* 38: 183–190 (in Turkish).
- Öztürk MO, Altunel FN (2006). A study of the metazoan parasite fauna of *Cyprinus carpio* L. (common carp) linked to seasonal changes and host ages in Lake Manyas, Turkey. *Bull Eur Assoc Fish Pathol* 26: 252–259.
- Öztürk MO, Bulut S (2006). Selevir Baraj Gölü (Afyonkarahisar)'ndeki *Cyprinus carpio* L. (sazan)'nın metazoon parazit faunası üzerine bir araştırma. *Fırat Üniv Fen ve Mühendislik Bilim Derg* 18: 143–149 (in Turkish).
- Öztürk T, Özer A (2014). Monogenean fish parasites, their host preferences and seasonal distributions in the Lower Kızılırmak Delta (Turkey). *Turk J Fish Aquat Sci* 14: 367–378.
- Panek FM (1987). Biology and ecology of carp. In: Cooper EL, editor. *Carp in North America*. Bethesda, MD, USA: American Fisheries Society, pp. 1–15.
- Paperna I (1964). The metazoan parasite fauna of Israel inland water fishes. *Bamidgedh* 16: 3–66.
- Pişkin Ç, Utuk AE (2008). Şanlıurfa balıklıgöl sazanlarında *Dactylogyrus* sp. ve *Trichodina* sp. olgusu. *Etilik Vet Mikrobiyol Derg* 19: 9–12 (in Turkish).
- Sağlam N (1992). Keban Baraj Gölü'nden yakalanan balıklarda görülen eksternal parazitlerin incelenmesi. MSc, Fırat University, Elazığ, Turkey (in Turkish).
- Scholz T, Brabec J, Král'ová-Hromadová I, Oros M, Bazsalovicsová E, Ermolenko A, Hanzelová V (2011). Revision of *Khawia* spp. (Cestoda: Caryophyllidea), parasites of cyprinid fish, including a key to their identification and molecular phylogeny. *Folia Parasitol* 58: 197–223.
- Selver MM, Beyazıt A, Tay S, Tokşen E (2013). Sazan balığı (*Cyprinus carpio* L. 1758) yetiştiriciliği yapılan işletmelerde görülen helmintlerin araştırılması. *Bornova Vet Bil Derg* 35: 1–8 (in Turkish).
- Sönmez ŞN (1996). Mogan Gölü balıklarında parazit faunasının incelenmesi. BSc, Ankara University, Ankara, Turkey (in Turkish).
- Soylu E (2009). Monogenean parasites on the gills of some fish species from Lakes Sapanca and Durusu, Turkey. *Ege Üniv Su Ürün Derg* 26: 247–251.
- Soylu E, Emre Y (2007). Monogenean and cestode parasites of *Pseudophoxinus antalyae*, Bogutskaya 1992 and *Cyprinus carpio*, Linnaeus 1758 from Kepez Antalya, Turkey. *Bull Eur Assoc Fish Pathol* 27: 23–28.
- Tarkan AS, Ekmekçi FG, Vilizzi L, Copp GH (2014). Risk screening of non-native freshwater fishes at the frontier between Asia and Europe: first application in Turkey of the Fish Invasiveness Screening Kit (FISK). *J Appl Ichthyol* 30: 392–398.
- Tekin-Özan S, Kır İ, Barlas M (2008). Helminth parasites of common carp (*Cyprinus carpio* L., 1758) in Beyşehir Lake and population dynamics related to month and host size. *Turk J Fish Aquat Sci* 8: 201–205.
- Topçu A, Taşçı S (1993). Van Yöresinde bulunan sazan (*Cyprinus carpio* L. 1758)'ların sindirim kanalı helmintleri. *Yüzüncü Yıl Üniv Vet Fak Derg* 4: 121–144 (in Turkish).
- Turgut E, Develi N, Yeşilayer N, Buhan E (2011). Seasonal occurrence of *Ligula intestinalis* infection in cyprinids from Almus Dam Lake, Turkey. *KSÜ Doğa Bil Derg* 14: 9–11.
- Turkish Statistical Institute (2012). *Su Ürünleri İstatistikleri/Fishery Statistics 2011*. Ankara, Turkey: Turkish Statistical Institute, Printing Division.
- Türkmen H, Tüzer E (1992). İznik Gölü'nde sazan ve akbalıklarında sindirim kanalı helmint enfeksiyonlarının yaygınlığı. *İstanbul Üniv Vet Fak Derg* 18: 109–119 (in Turkish).
- Uzunay E, Soylu E (2006). Sapanca Gölü'nde yaşayan sazan (*Cyprinus carpio* Linnaeus, 1758) ve karabalık (*Vimba vimba* Linnaeus, 1758)'in metazoan parazitleri. *Türk Parazitol Derg* 30: 141–150 (in Turkish).
- Vilizzi L (2012). The common carp, *Cyprinus carpio*, in the Mediterranean region: origin, distribution, economic benefits, impacts and management. *Fish Manage Ecol* 19: 93–110.
- Vilizzi L, Tarkan AS, Ekmekçi FG (2013). Stock characteristics and management insights for common carp (*Cyprinus carpio*) from Anatolia: a review of weight–length relationships and condition factors. *Turk J Fish Aquat Sci* 13: 759–775.
- Vilizzi L, Ekmekçi FG, Tarkan AS (2014a). Natural diet of common carp (*Cyprinus carpio* L., 1758) in Anatolia (Turkey): a review. *Med Mar Sci* 15: 216–218.
- Vilizzi L, Ekmekçi FG, Tarkan AS, Jackson ZJ (2015). Growth of common carp *Cyprinus carpio* in Anatolia (Turkey), and relative to native and invasive areas worldwide. *Ecol Freshwat Fish* (in press).
- Vilizzi L, Tarkan AS, Ekmekçi FG (2014b). Reproductive biology of common carp (*Cyprinus carpio* L., 1758) in Anatolia (Turkey): a review. *Med Mar Sci* 15: 218–222.
- Welcomme RL (1988). *International Introductions of Inland Aquatic Species*. Fisheries Technical Paper 294. Rome, Italy: FAO.
- Yetim M (1985). Eskişehir'de tüketilen balıklarda görülen parazitler. MSc, Anadolu University, Eskişehir, Turkey (in Turkish).